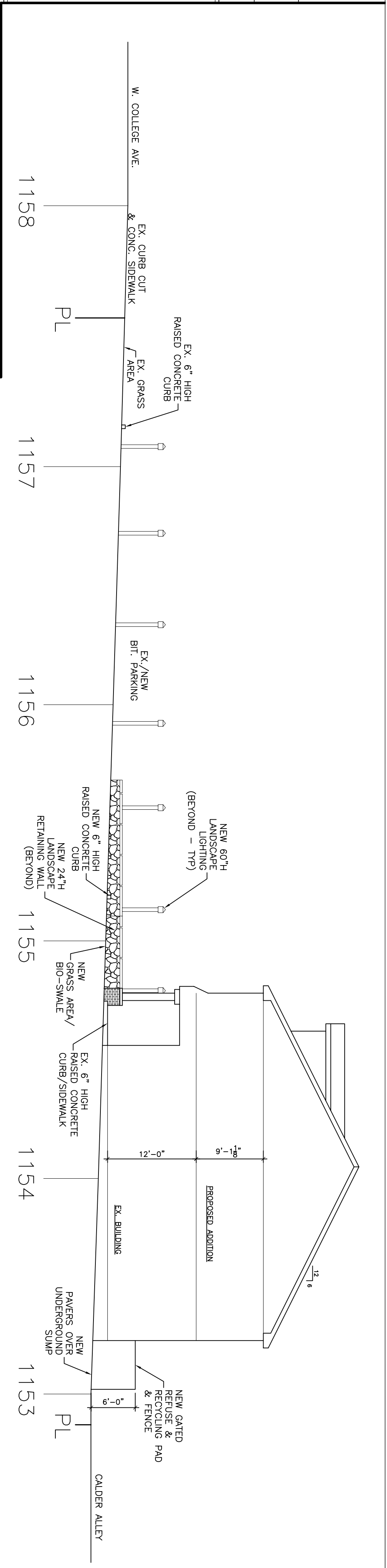


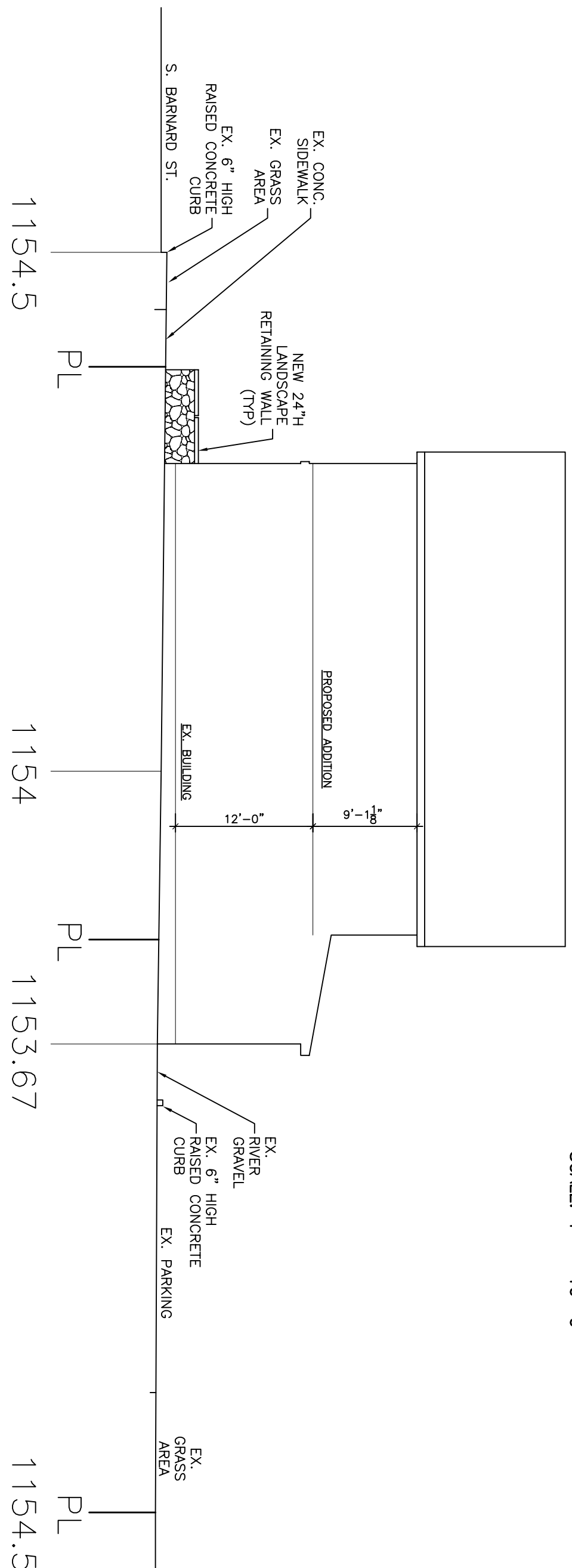
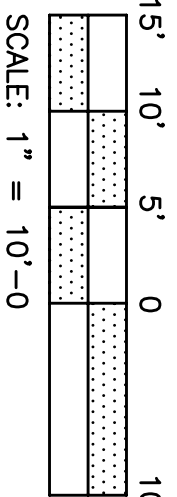
- ADA PARKING SPACE & SIDEWALK NOTES:
- ADA PARKING SPACE & LOADING AREA SURFACE SHALL NOT SLOPE STEEPER THAN 1:48 (2%) IN EITHER DIRECTION.
 - ADA PARKING SPACE SHALL BE MARKED WITH THE INTERNATIONAL SYMBOL OF ACCESSIBILITY AND REQUIRED "VAN ACCESSIBLE" SIGNAGE INSTALLED PER DETAIL.
 - ADA LOADING AREA SHALL BE STRIPED, AS INDICATED, TO DISCOURAGE PARKING.
 - ADA ACCESSIBLE ROUTE SIDEWALKS SURFACES SHALL NOT SLOPE STEEPER THAN 1:20 (5%) NOR HAVE A CROSS SLOPE OF MORE THAN 1:48 (2%).

W. COLLEGE AVE. 50' R/W



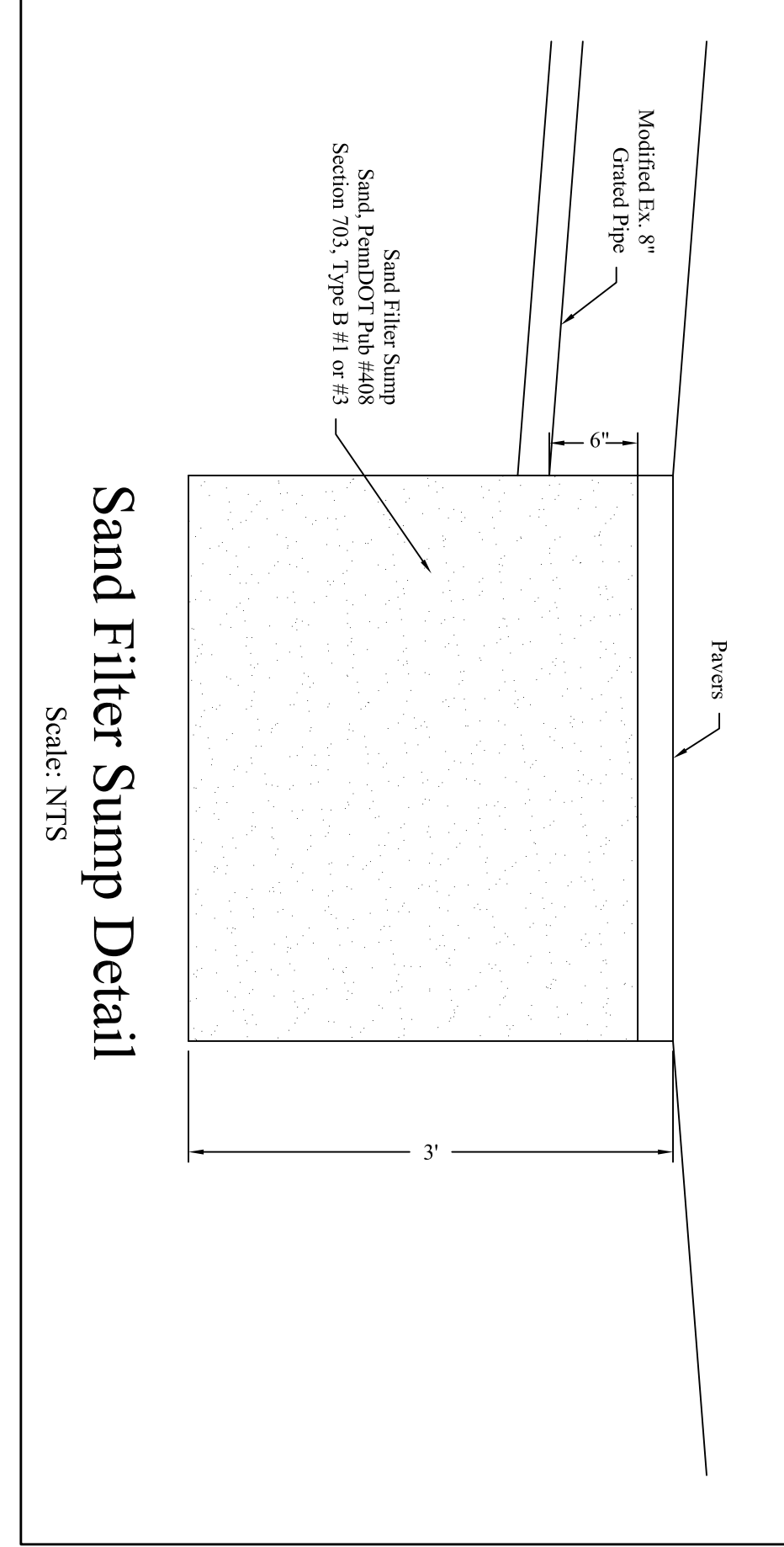
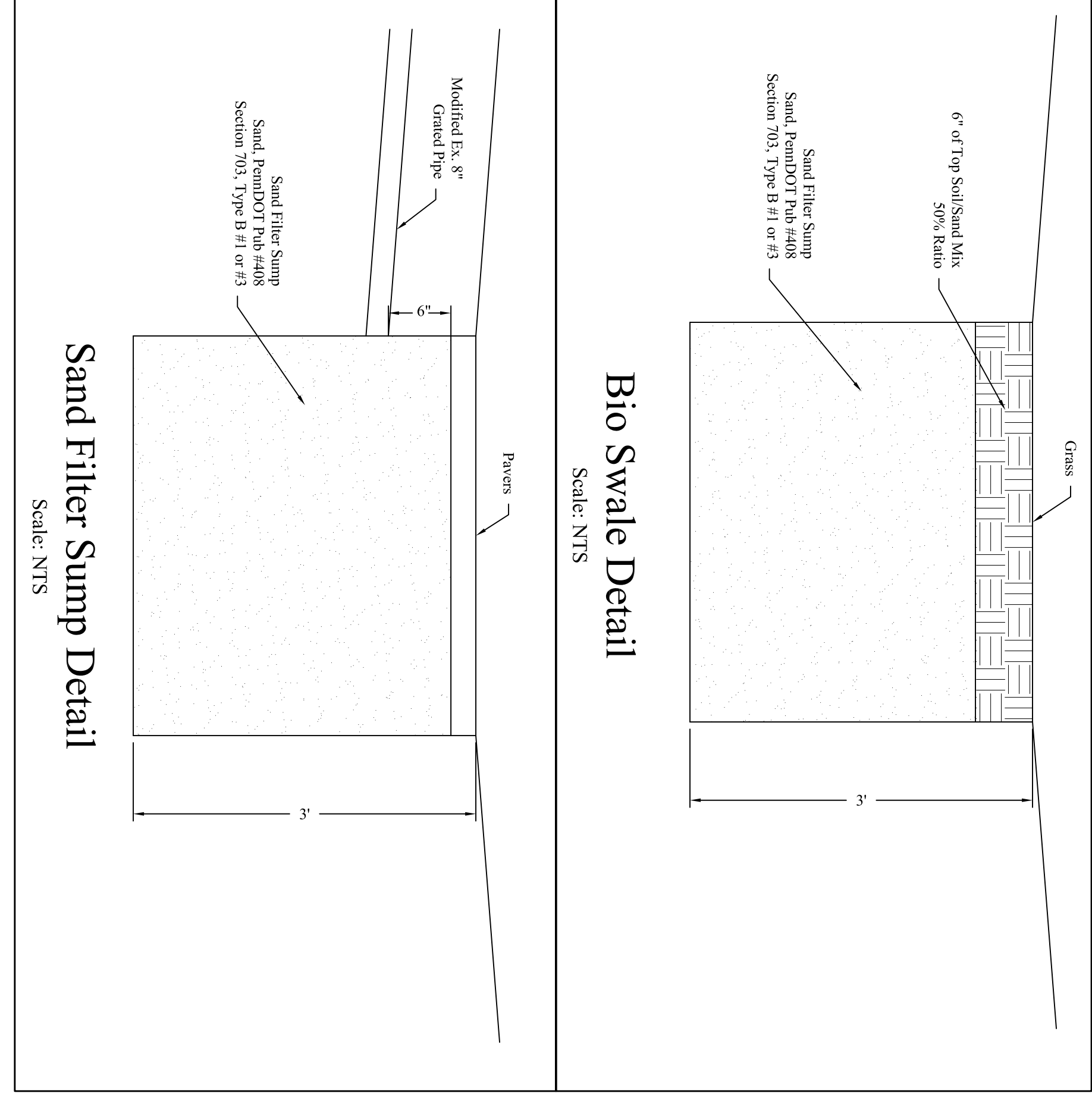
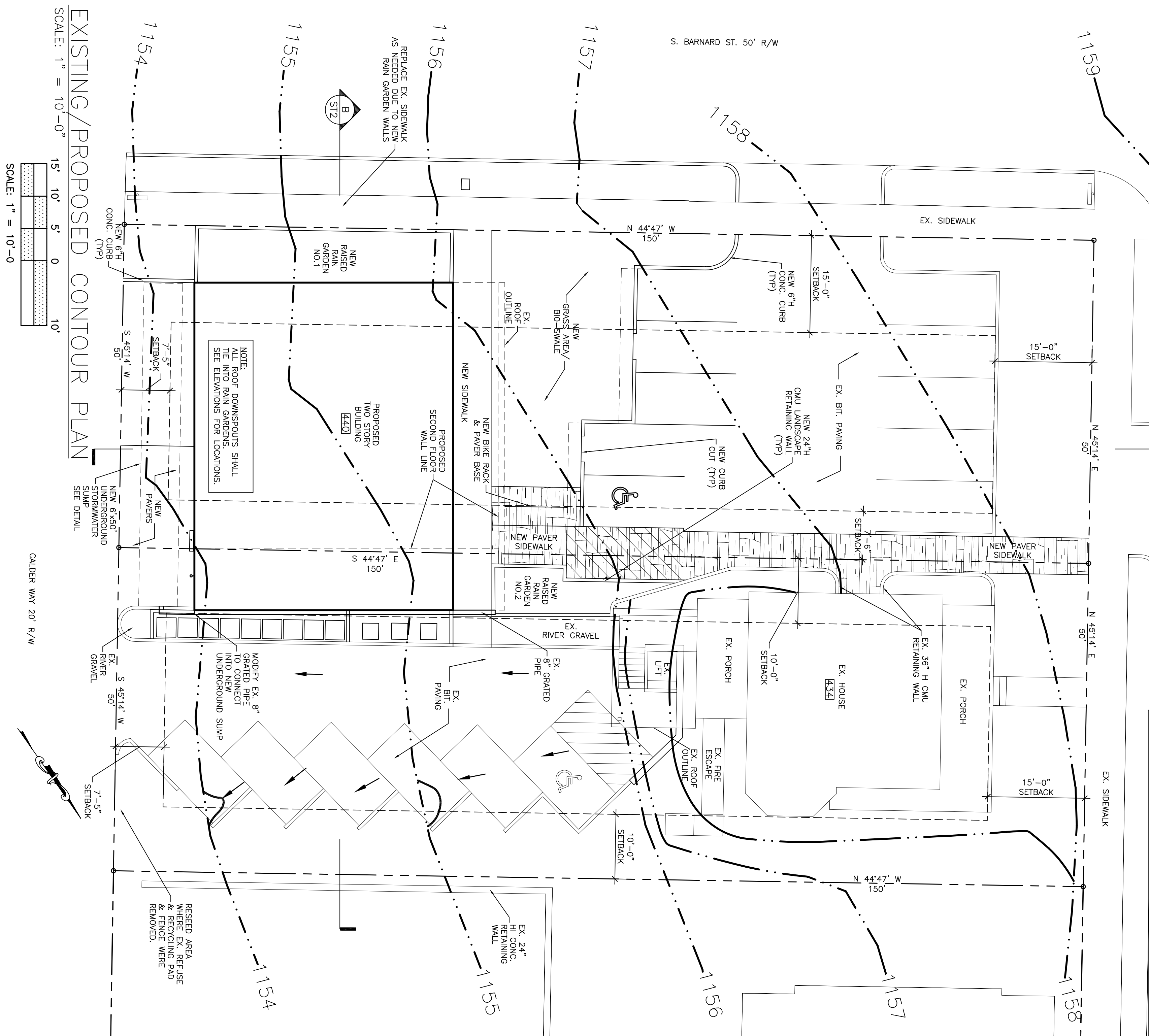
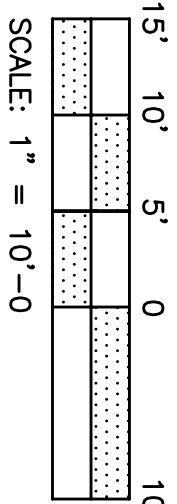
SITE SECTION A

SCALE: 1" = 10'-0"



SITE SECTION B

SCALE: 1" = 10'-0"



- OWNERSHIP AND MAINTENANCE PLAN:**
- OWNER SHALL MAINTAIN SAND FILTER SUMP IN WORKING ORDER AND FREE FROM DEBRIS.
 - OWNER SHALL MAINTAIN PARKING AREA FREE FROM DEBRIS AND KEEP FLOW PATHS TO SAND FILTER SUMP OPEN AT ALL TIMES.
 - LANDSCAPE SHALL BE MAINTAINED AND REPAIR DAMAGE PATHS AND FILTER SUMP WITHIN 24 HOURS OF STORMS.
 - OWNER SHALL MAINTAIN RAIN GARDENS IN WORKING ORDER AND FREE FROM DEBRIS.

Note: State College Borough, its agents and assigns, are expressly authorized with right-of-entry for the purpose of inspecting all stormwater facilities and, in the case of inaction on the part of the Owner, to repair stormwater facilities, with all costs borne by the Owner.

Municipal Stormwater Certification

I, _____, have reviewed this Stormwater Management Plan in accordance with the Design Standards and Criteria of the State College Borough Stormwater Management Ordinance.

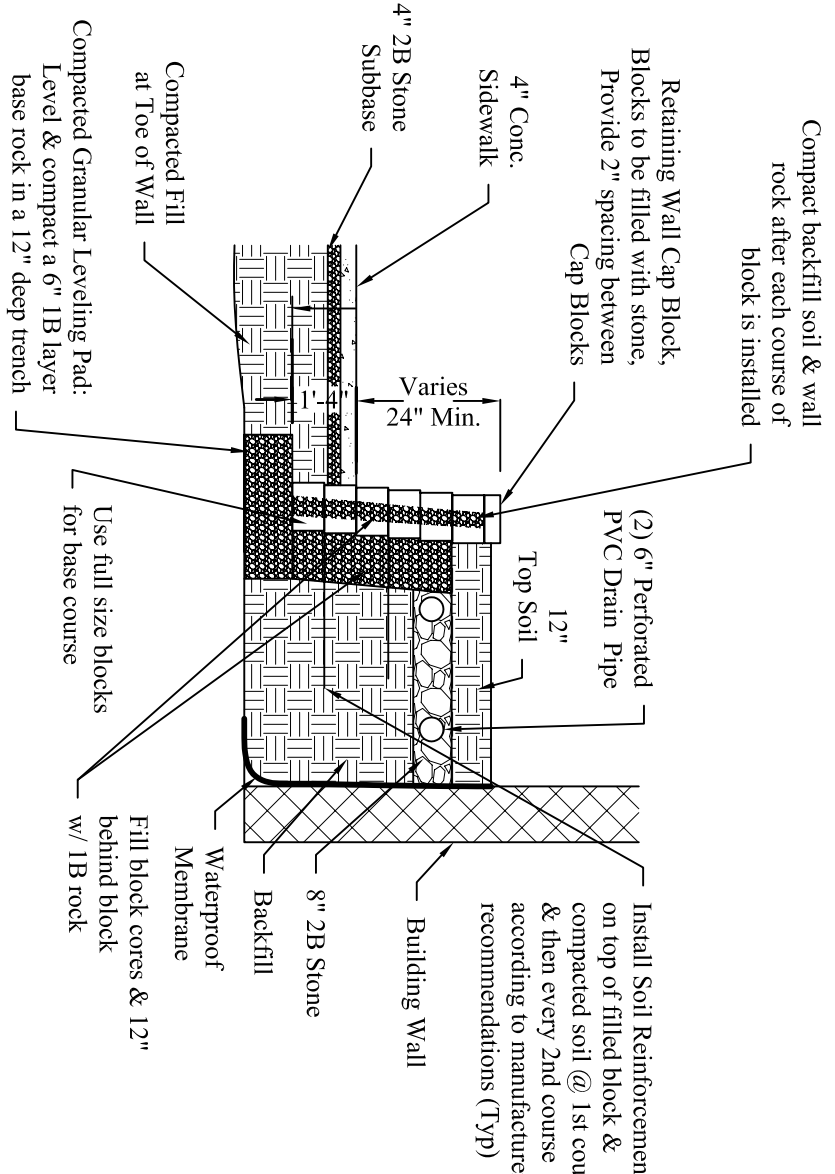
Stormwater Professional Engineer Certification

I, _____, hereby certify that the Stormwater Management Plan meets all design standards and criteria of the State College Borough Stormwater Management Ordinance.

Stormwater Facilities Acknowledgement

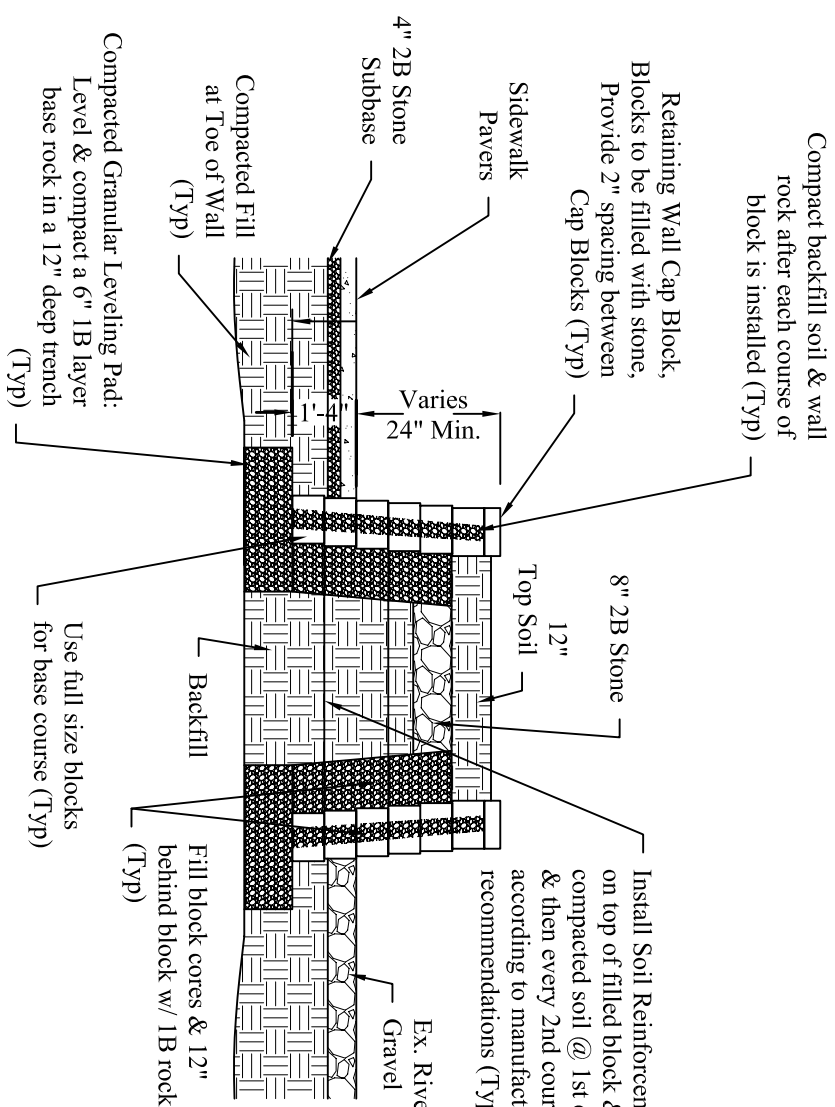
I, the landowner, acknowledge the Stormwater Management System is to be maintained in accordance with the approved Ownership and Maintenance Program and shall remain a permanent fixture which can be altered only after approval of a revised plan by the State College Borough.

Owner _____ Date _____



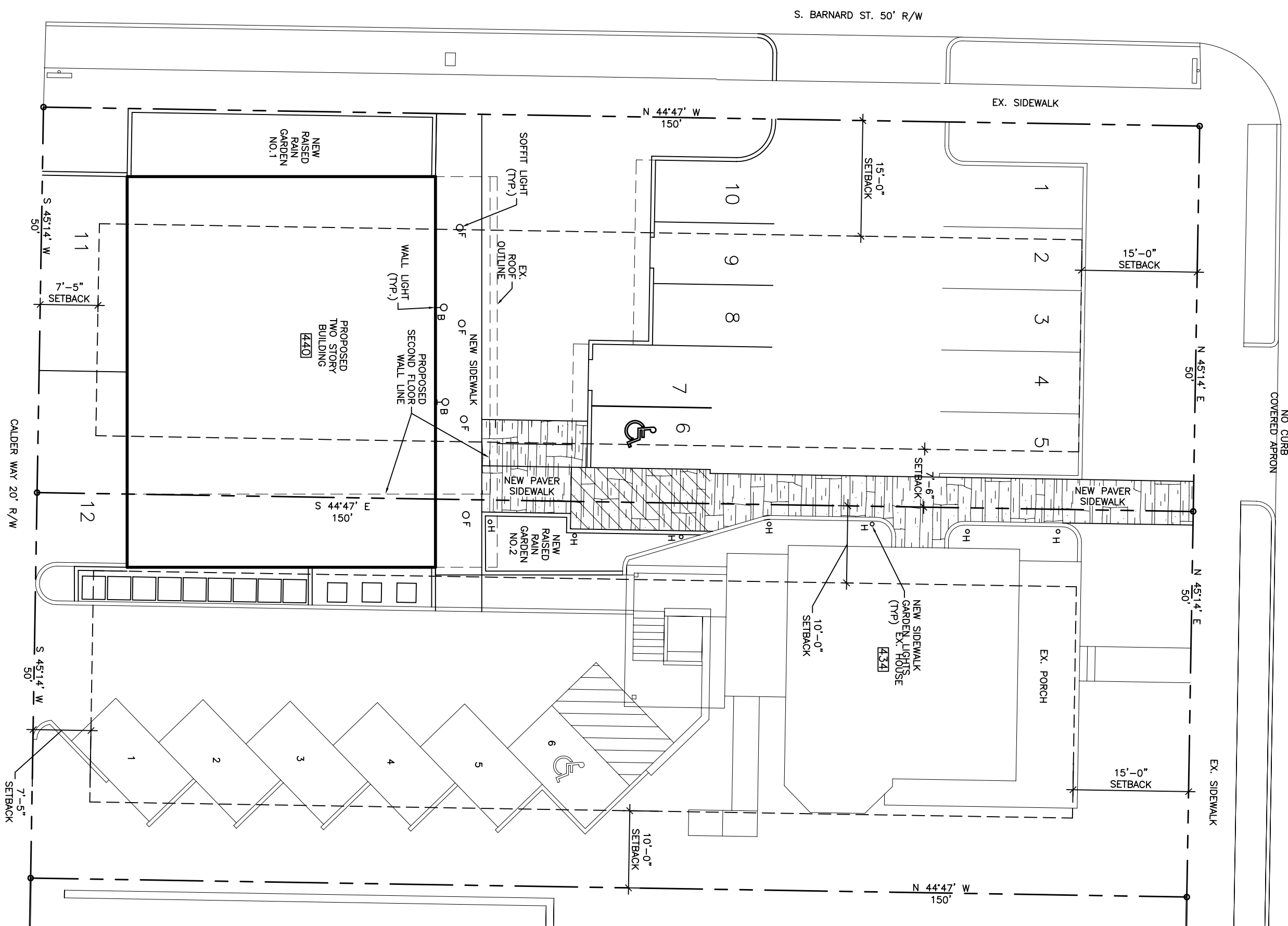
Rain Garden No. 1/Retaining Wall

Scale: N.T.S.



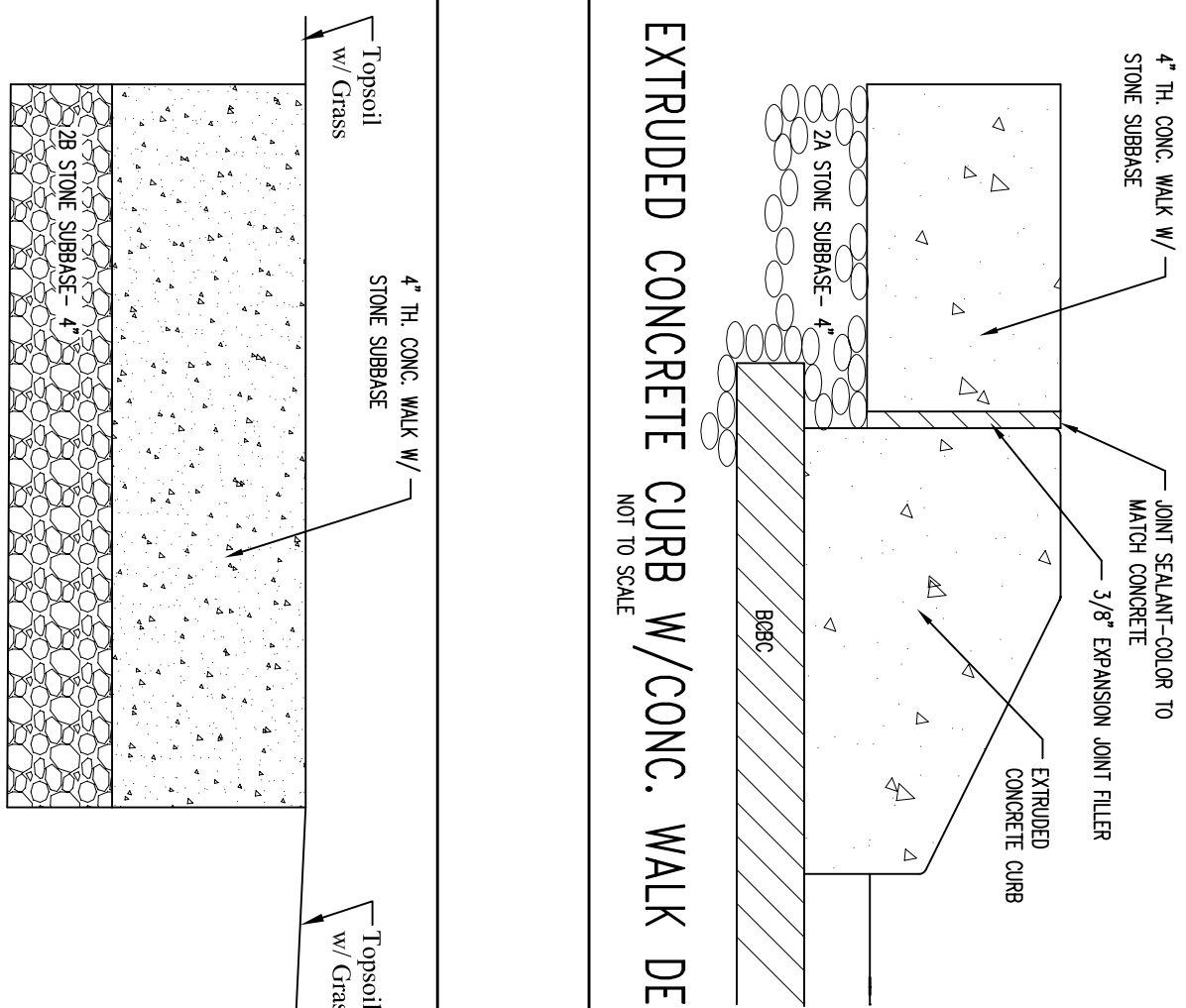
Rain Garden No. 2/Retaining Wall

Scale: N.T.S.



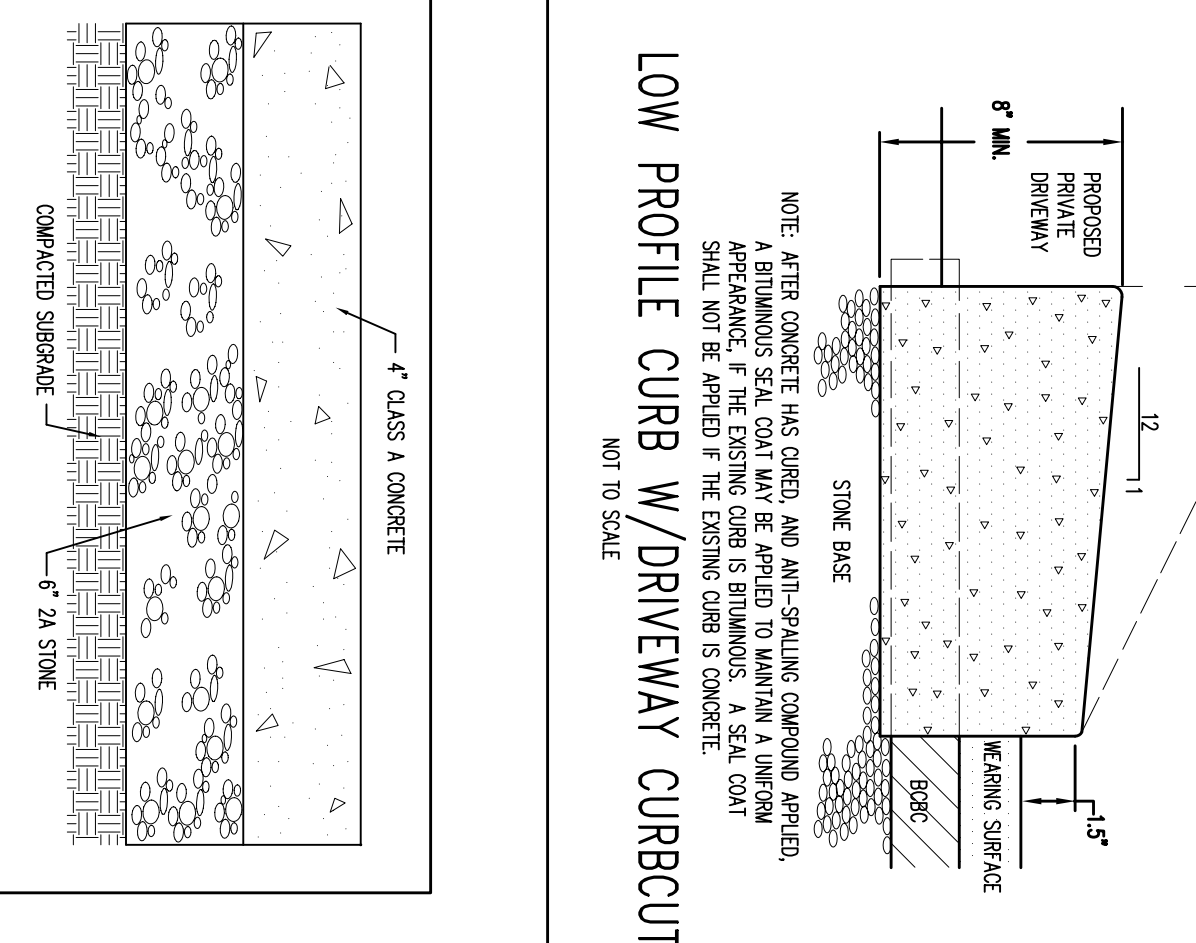
LIGHTING FIXTURE SCHEDULE						
FIGURE NO.	DESCRIPTION	LAMPS	VOLTAGE	MOUNTING	MEQ. MODEL # OR EQUIV.	REMARKS
B ♀	OUTSIDE LIGHT	(1) MEDIUM BASE 100W	120	WALL	FORTE LIGHTING 1093-01-14	NO SUBSTITUTIONS
F ○	CAN LIGHT	(1) 75W	120	RECESSED	PRISMATIC FINICS W/ TBW63 6" IC RATED	
H ○	PATH LIGHT	MEDIUM BASE (1) 100W	120	POST	FORTE LIGHTING 1094-01-14	NO SUBSTITUTIONS

LIGHTING NOTES:
01. PER SECTION 2706, 1.2(d), OF THE STATE COLLEGE BOROUGH LIGHTING ORDINANCE, BUILDING FACADE LIGHTING, UTILIZING NON-CUTOFF LUMINAIRES OF GLOBES OR ARCHITECTURAL-STYLED FIXTURES MAY BE USED TO ILLUMINATE FIRST LEVEL FACADES PROVIDED THAT THE MAXIMUM INITIAL LUMINANCE LEVEL SHALL NOT EXCEED 3,500 LUX. LUMEN'S & MOUNTING HEIGHT DOES NOT EXCEED 10 FEET.
02. PER SECTION 2706, 1.4, OF THE STATE COLLEGE BOROUGH LIGHTING ORDINANCE, LANDSCAPE LIGHTING, UTILIZING NON-CUTOFF LUMINAIRES MAY BE USED PROVIDED THAT THE FIXTURES ARE SHIELDED & AIMED SO THAT THE CANDLEGLOW DISTRIBUTION IS DIRECTED TOWARD THE FUNCTIONAL LANDSCAPE AREA & THAT THEY ARE NOT DIRECTED TOWARD PROPERTY LINES. MAXIMUM INITIAL LUMINANCE LEVEL, PRODUCED SHALL NOT EXCEED 4,000 LUX. ANY PROPOSED LIGHT FIXTURE "H" MEETS THESE REQUIREMENTS.



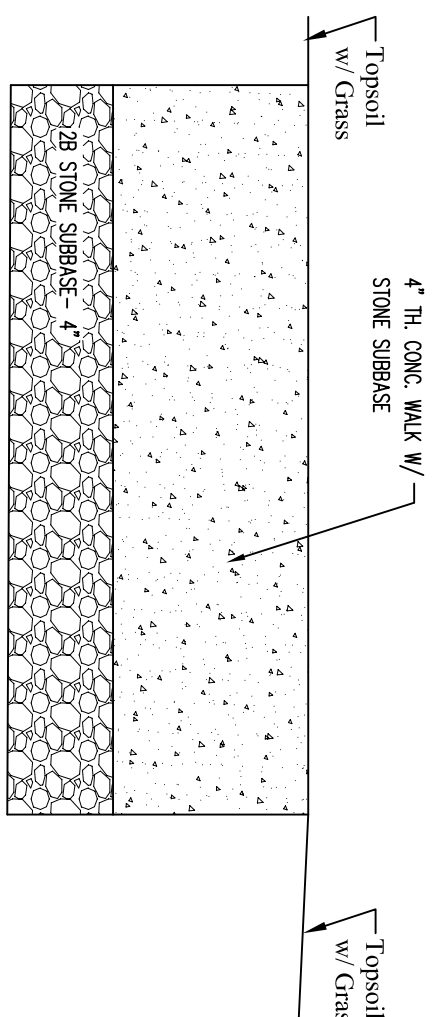
EXTRUDED CONCRETE CURB W/CONC. WALK DETAIL

NOT TO SCALE

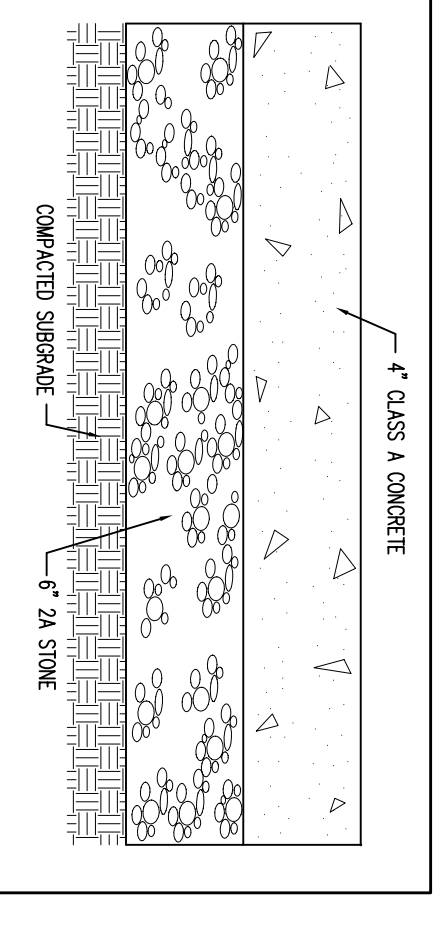


LOW PROFILE CURB W/DRIVEWAY CURBCUT

TO SCALE

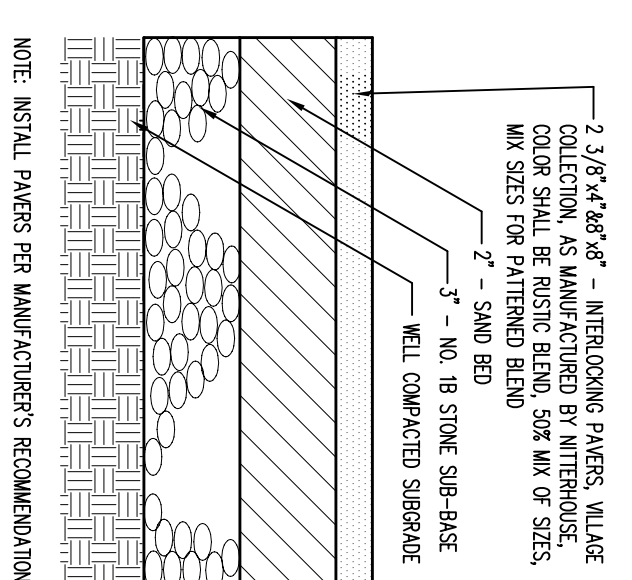


CONCRETE SIDEWALK



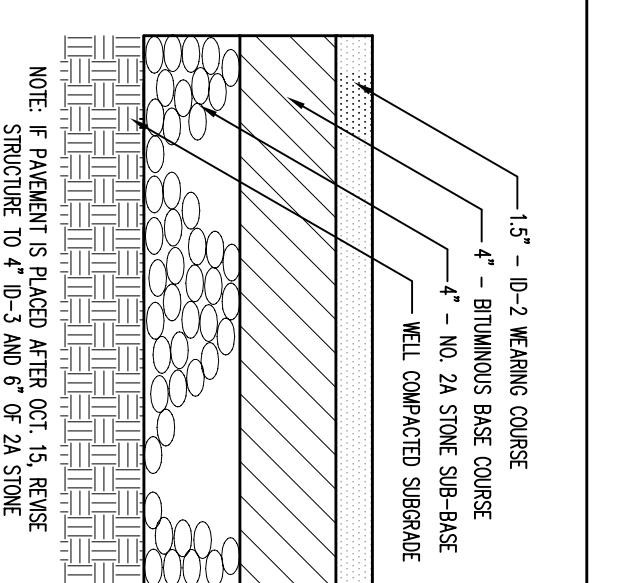
HVAC & REFUSE PAD DETAIL

NOT TO SCALE



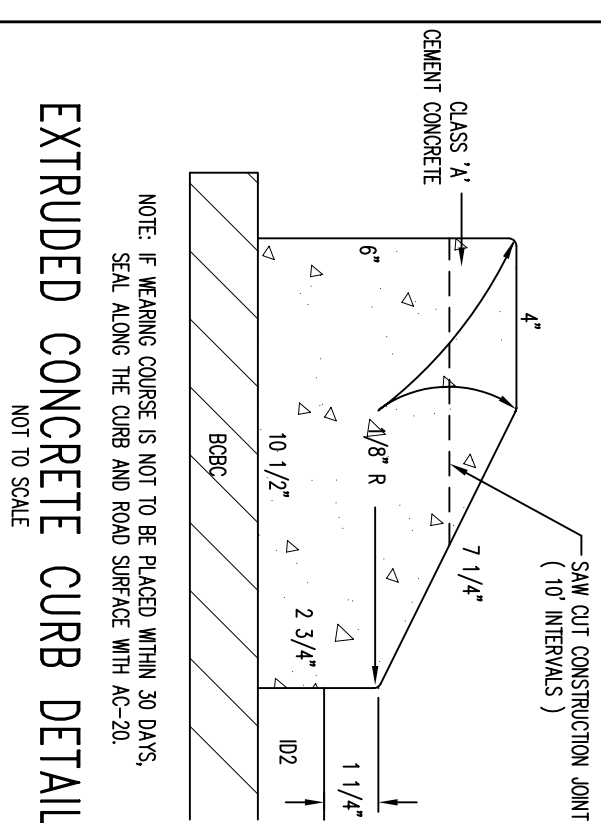
PAVER DETAIL

NOT TO SCALE



PAVEMENT SECTION

NOT TO SCALE



EXTRUDED CONCRETE CURB DETAIL

NOT TO SCALE